



# Android APP NVR Viewer



**User Manual**  
DN-16111 • DN-16112 • DN16113

## Table of Contents

Download the APP.....	3
Running the app - Add NVR.....	3
Running the app - Add NVR (Auto search) .....	4
Running the app - Add NVR (Add manually) .....	7
Running the app - Access NVR.....	7
Running the app - Access live video.....	8
Running the app - Live video.....	8
Running the app - Live video control menu.....	9
Running the app - Playback.....	9
Running the app - Playback controls.....	13
Running the app - Playback control menu.....	14
Take Snapshot .....	14
Take snapshot - View the snapshot image .....	15

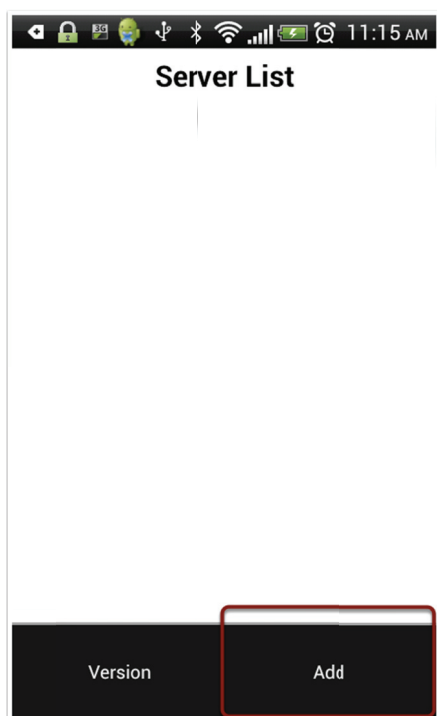
## Download the APP

Please go to Google Play and search for “iGuard NVR Mobile Viewer”. Then please download this APP into your Android device.

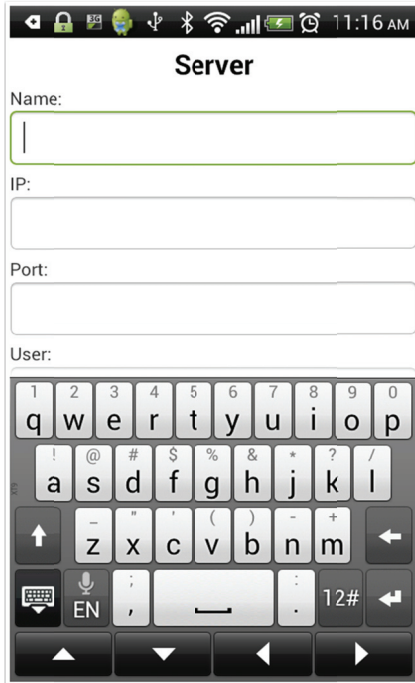


## Running the app - Add NVR

Tap on "Add" at the bottom to add a new NVR to the app.

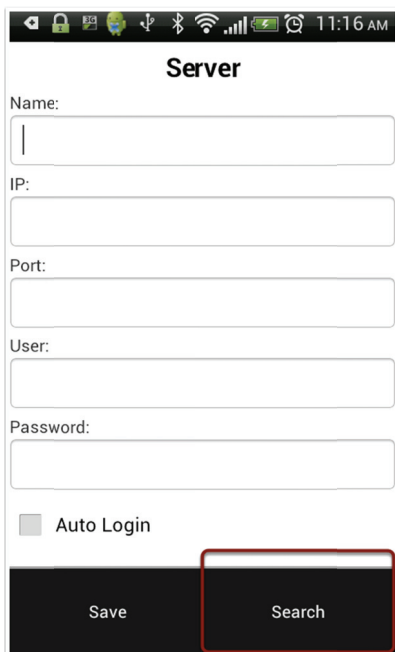


You will be directed to the "Server" page to enter server's information. Continue to enter the information to add the NVR manually. Or you can press the device's "menu" button again to search NVRs on the local network.

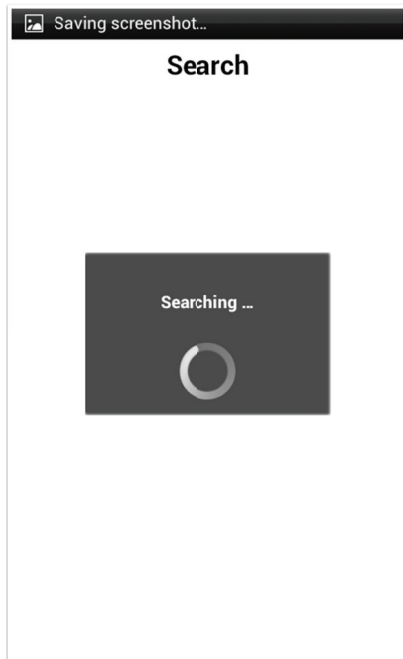


### Running the app - Add NVR (Auto search)

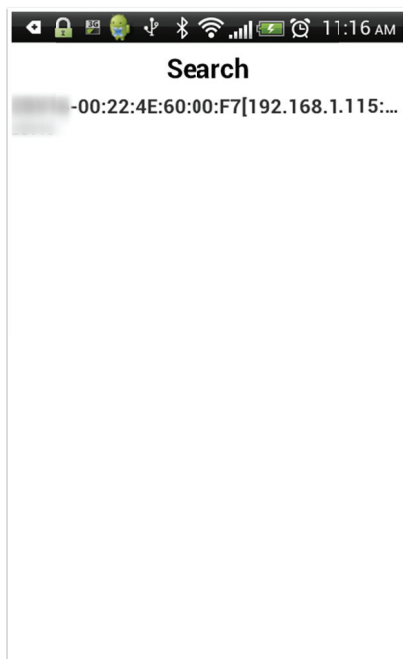
Tap on "Search" to begin.



The search progress should be displayed.



The search results will be displayed with NVR's model name along with its MAC address. Tap on it to continue the add process.



You will be redirected back to the Server's information page and the "Name", "IP", and "Port" fields should be filled in automatically.

Server

Name:  
-00:22:4E:60:00:F7

IP:  
192.168.1.115

Port:  
80

User:

Password:

Auto Login

Enter NVR's username, and password to continue. Check "Auto Login" if you don't want to be prompted for NVR's credential every time you access it from the app.

Server

80

User:  
admin

Password:  
.....

Auto Login

1 2 3 4 5 6 7 8 9 0  
q w e r t y u i o p  
! @ # \$ % & \* ? /  
a s d f g h j k l  
↑ - " ' ( ) \_ + ←  
↓ EN , \_ . 12# →

## Running the app - Add NVR (Add manually)

If you'd like to add NVR manually, fill in all the fields in the "Server" page and press the "menu" button on the Android device and tap "Save".

The screenshot shows the 'Server' configuration page. The fields are as follows:

- Name:** [Redacted] -00:22:4E:60:00:F7
- P:** 192.168.1.115
- Port:** 80
- User:** admin
- Password:** [Redacted]
- Auto Login

At the bottom, there are two buttons: 'Save' (highlighted with a red box and a circled '2') and 'Search'.

## Running the app - Access NVR

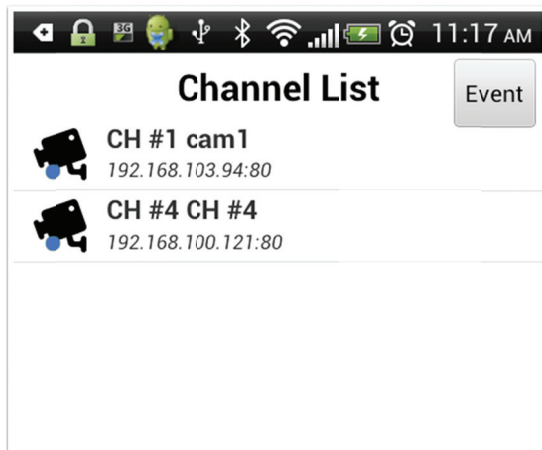
You will be redirected back to the "Server List" page again and the NVR should now be available on the list. Tap on it to access the live video.

The screenshot shows the 'Server List' page. The list contains two entries:

- Entry 1 (highlighted):** NVR32CH-00:22:4E:60:00..  
192.168.1.115:80  
Buttons: Remove, Edit
- Entry 2 (blurred):** [Redacted]  
Buttons: Remove, Edit

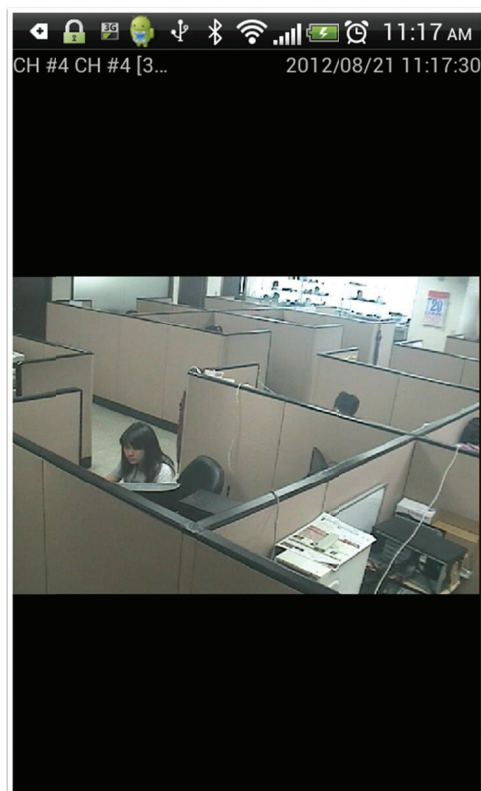
## Running the app - Access live video

You will be presented with the "Channel List" page first. Tap on a channel to access its live video. You can only view one live video at a time.



## Running the app - Live video

Once you enter the live view, you should see the live video in the center, its channel name, number, fps and time on the top.

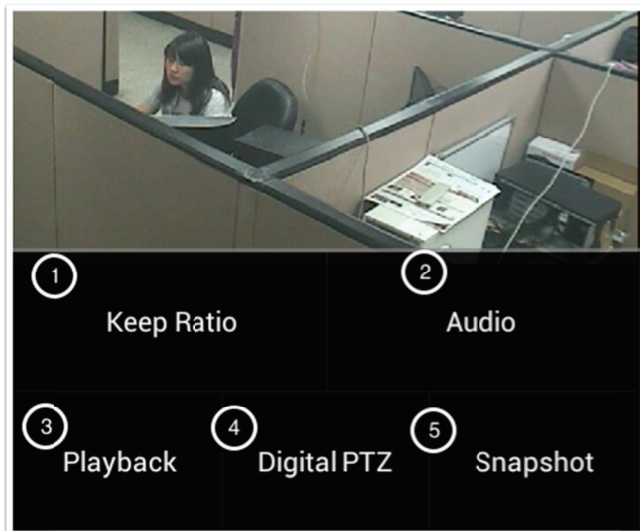




## Running the app - Live video control menu

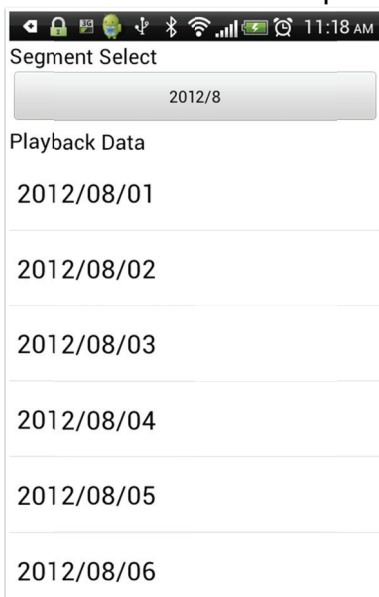
Press the "menu" button on your Android device opens up the control menu at the bottom. In the control menu, you can:

1. Change display aspect ration
2. Turn on/off audio
3. Playback
4. Digital PTZ
5. Take snapshot

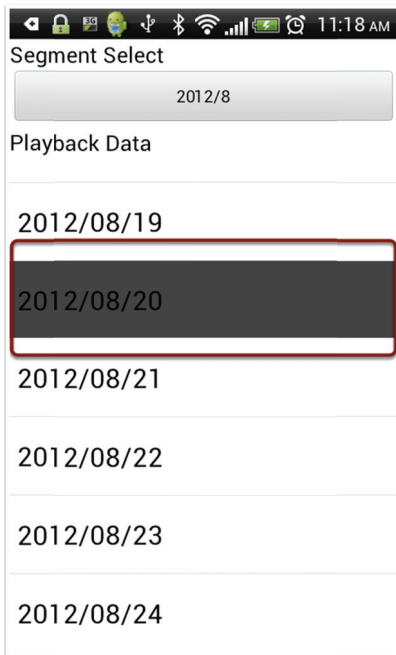


## Running the app - Playback

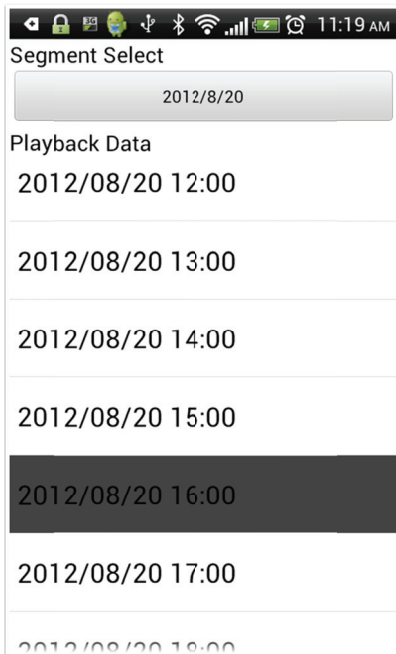
Tap on "Playback" directs you to the Playback Data page display recording data of the current month. Swipe up to scroll down and find the available recording data.



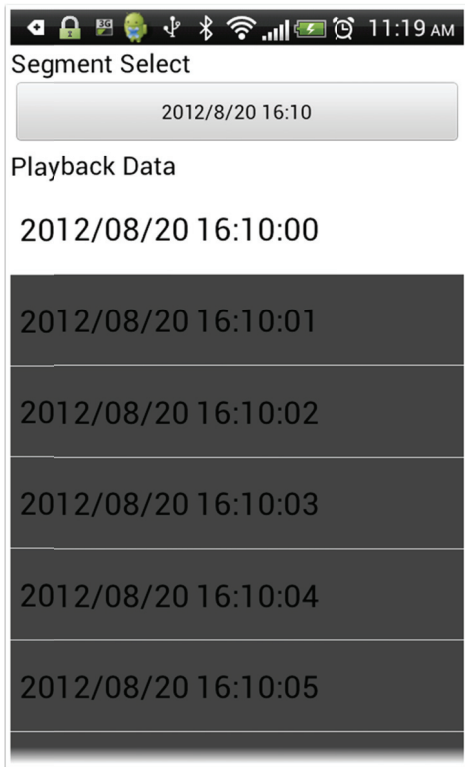
Dates with recording data will be highlighted in dark gray. Tap on one to continue.



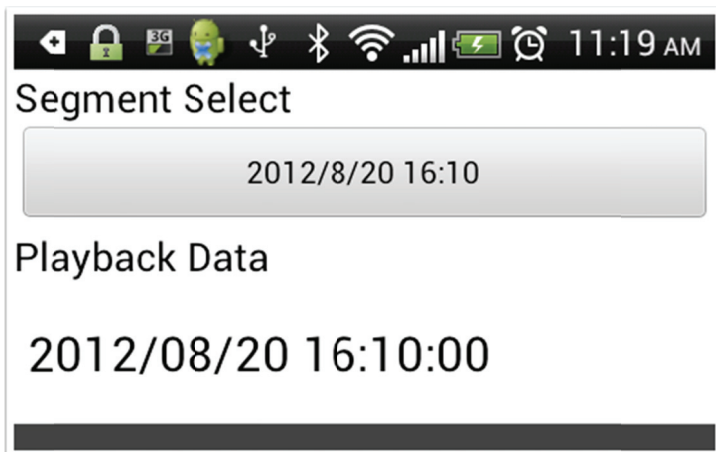
You will then enter the hour view of the selected date. Hours with recording data available will be highlighted in dark gray as well. Tap on it to continue.



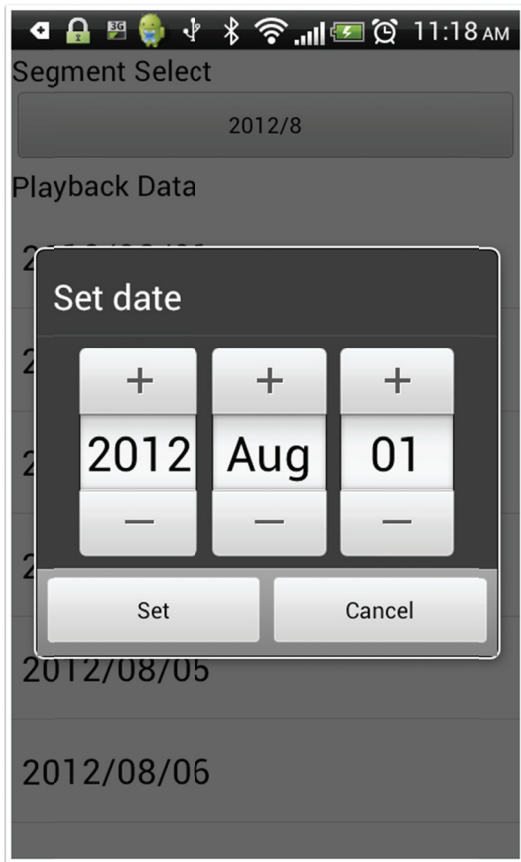
The recording data is displayed as small as in second.



At any point in this page, you can tap on the Segment Select button to go to a specific date.



Set the date you would like to go to in the pop-up window.



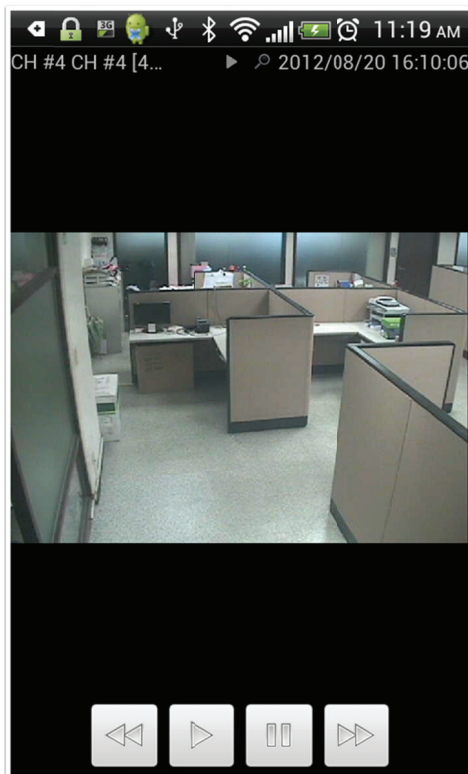
## Running the app - Playback controls

Once the playback starts, its video will be displayed in the center along with its channel info playback speed and time displayed on the top. The playback control is available at the bottom of the screen. You are able to:

1. Rewind
2. Play/Stop
3. Pause
4. Fast Forward

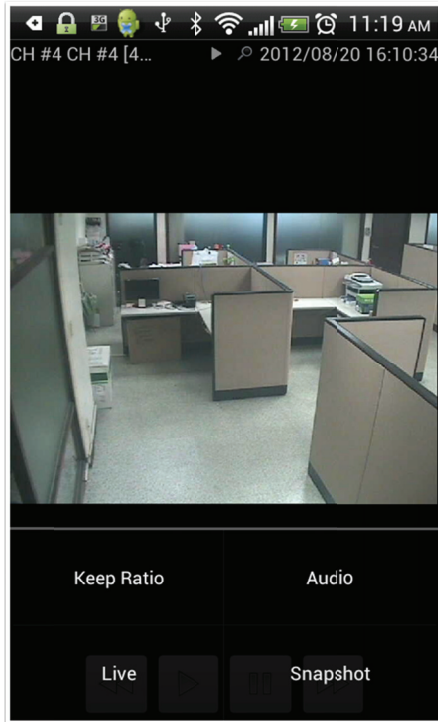
Tap on Rewind or Fast Forward more than once changes its speed. It starts from 2x and goes up to 32 x.

Tap on the Play button again to playback in its normal speed again.



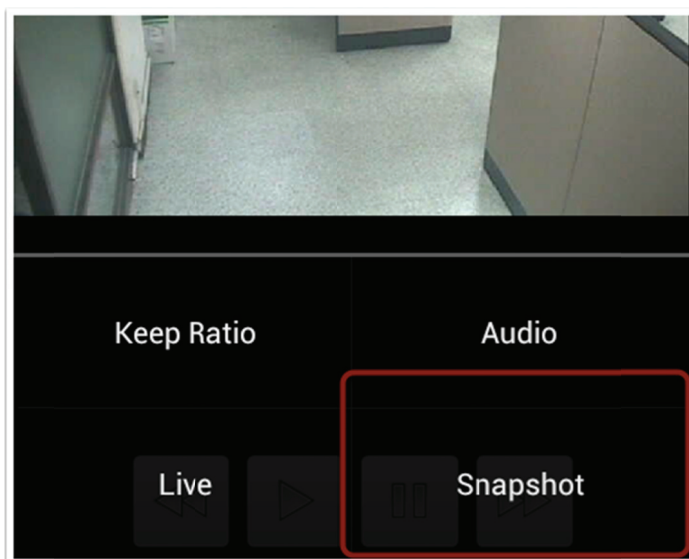
## Running the app - Playback control menu

Press the "menu" button on the Android device also opens up the control menu for the playback at the bottom.

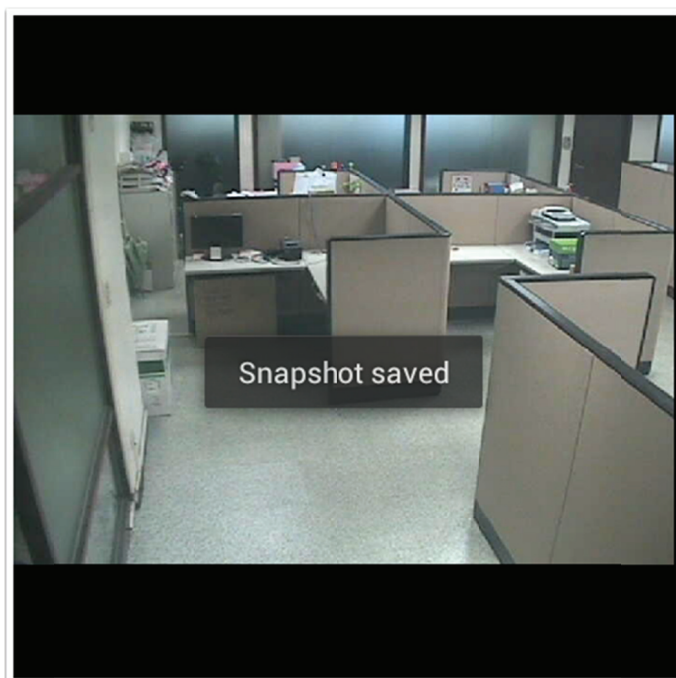


## Take Snapshot

The snapshot function is available both in live video and playback. Press the "menu" button on the Android device in live or playback video to access the control menu and tap on "Snapshot".



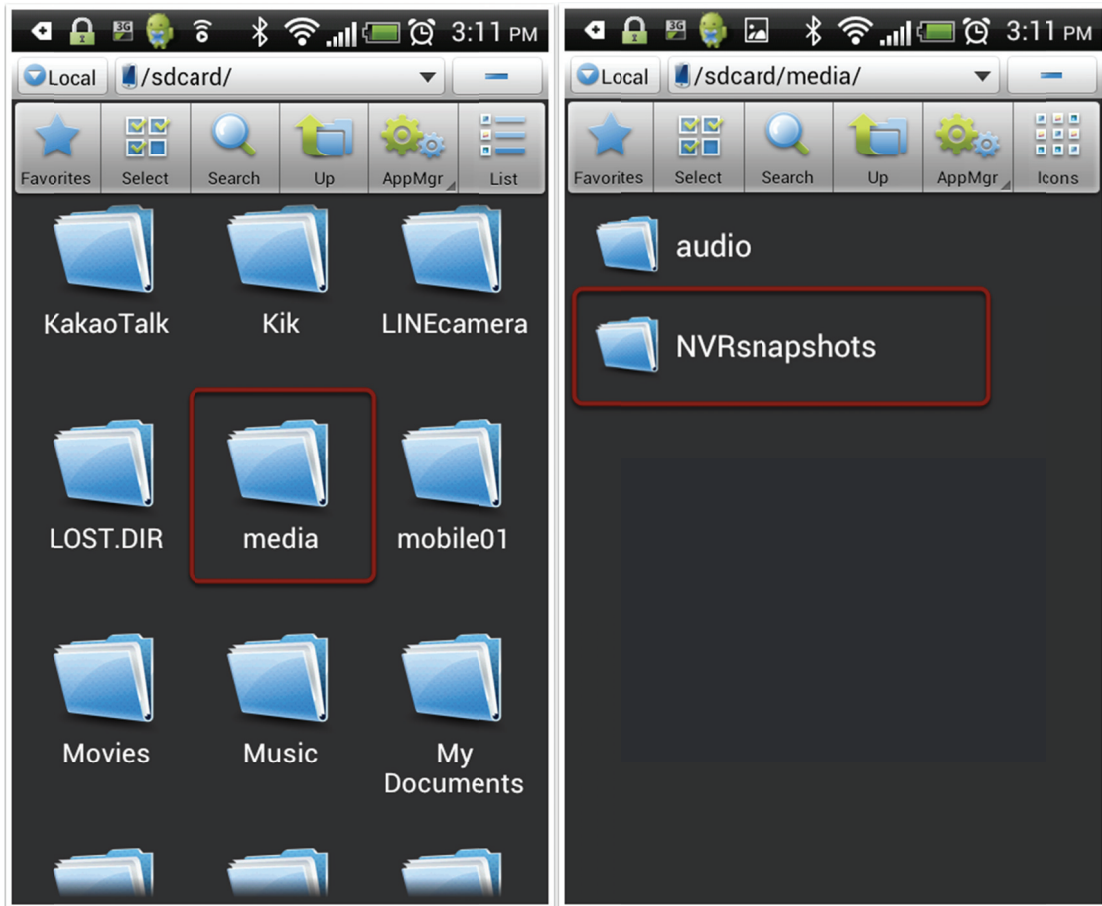
You will be notified on screen once the snapshot is taken and saved.



### **Take snapshot - View the snapshot image**

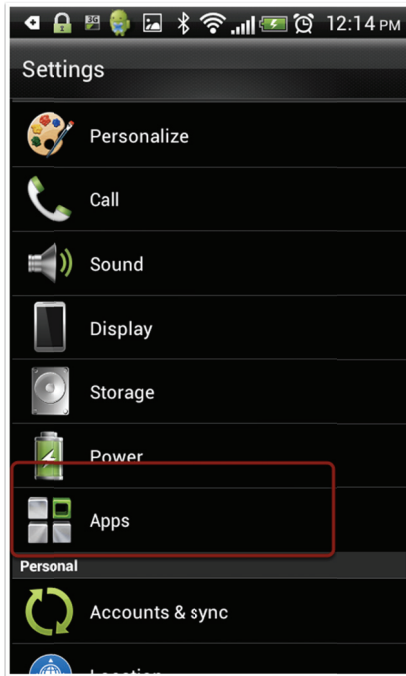
The snapshot is automatically saved in the SD memory on your Android device. The images are saved in the "NVRsnapshots" folder under the "media" folder in your SD memory card. To view the images, use a 3rd party file manager app to locate the "media" folder in the SD memory card. The "media" folder is in the top-level directory of the SD memory card.

The file manager app used in this manual is called "ES file explorer". It can be downloaded as a free app from the Google Play store.

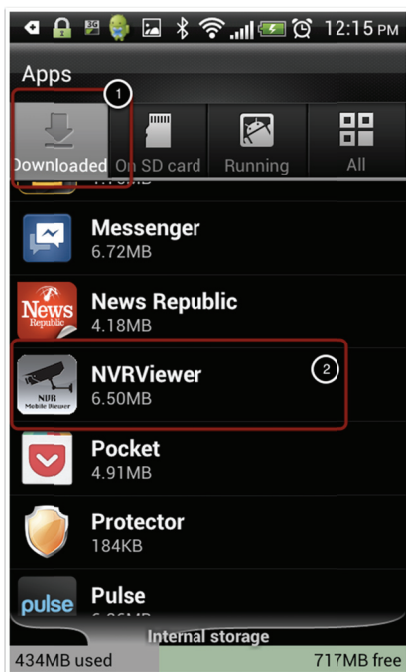




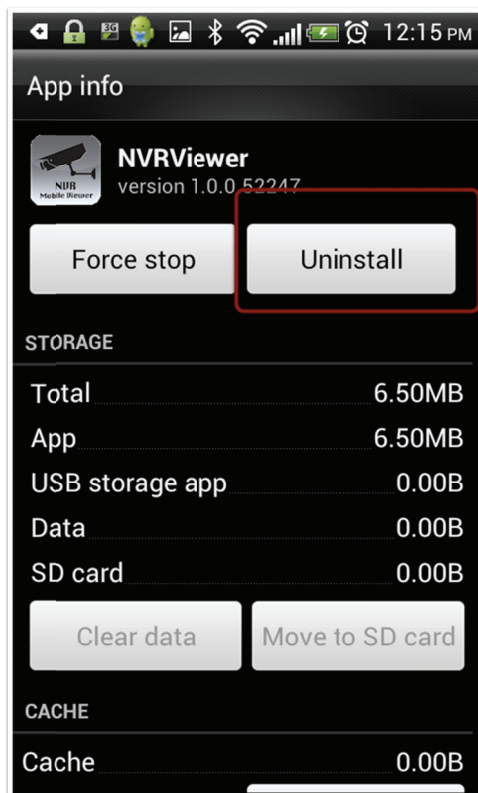
To uninstall the app, go to "Settings" menu on your Android device and tap on the "Apps" option.



Swipe up to scroll down under the "Downloaded" tab and locate the NVRViewer. Tap on it to continue.



Tap on "Uninstall".



Hinweis: Bei falscher Installation und unsachgemäßem Gebrauch im Wohnbereich kann das Gerät Störungen bei Rundfunkgeräten und anderen elektronischen Geräten verursachen. Ein sachgemäßer Gebrauch liegt vor, wenn das Gerät, soweit durchführbar, mit geschirmten Anschlusskabeln betrieben wird (bei Netzwerkprodukten zusätzlich geschirmter Kabel der Kategorie 5e und höher). Das Gerät wurde getestet und liegt innerhalb der Grenzen für Computerzubehör der Klasse A gemäß den Anforderungen nach EN 55022. Warnung: Dieses Produkt entspricht der Prüfklasse A –es kann im Wohnbereich Funkstörungen verursachen; in diesem Fall kann vom Betreiber verlangt werden, angemessene Maßnahmen durchzuführen und dafür aufzukommen. Konformitätserklärung: Das Gerät erfüllt die EMV-Anforderungen nach EN 55022 Klasse A für ITE und EN 55024. Geräte mit externer oder eingebauter Spannungsversorgung erfüllen weiterhin die Anforderungen nach EN 61000-3-2 und EN 61000-3-3. Damit sind die grundlegenden Schutzanforderungen der EMV-Richtlinie 2004/108/EC erfüllt. Die CE-Konformität wurde nachgewiesen. Die entsprechenden Erklärungen sind beim Hersteller hinterlegt.

www.assmann.com | ASSMANN Electronic GmbH | Auf dem Schüffel 3 | 58513 Lüdenscheid | Germany